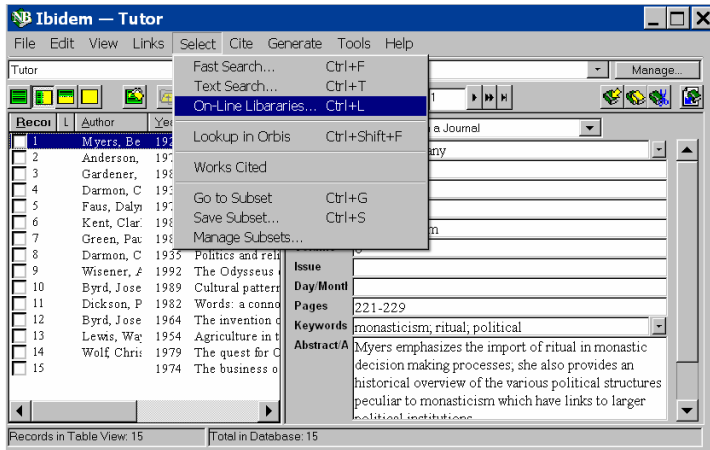


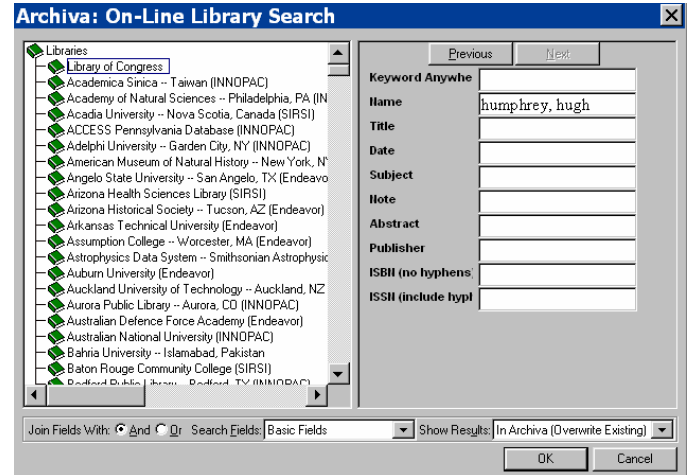
# Archiva Pro: On-Line Library Search

Archiva Pro is Nota Bene's new web research tool designed to work with Scholar's Workstation or Lingua Workstation (version 8.0).

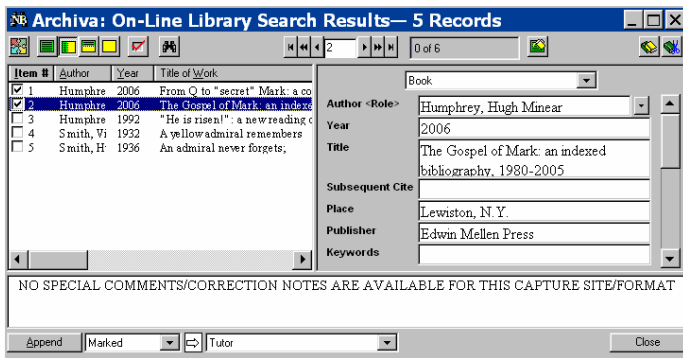
**1** When Archiva Pro is installed, there is a new option on the Select menu. Choose Select, On-Line Libraries (or, in earlier versions of Nota Bene, choose Select, WebSearch).



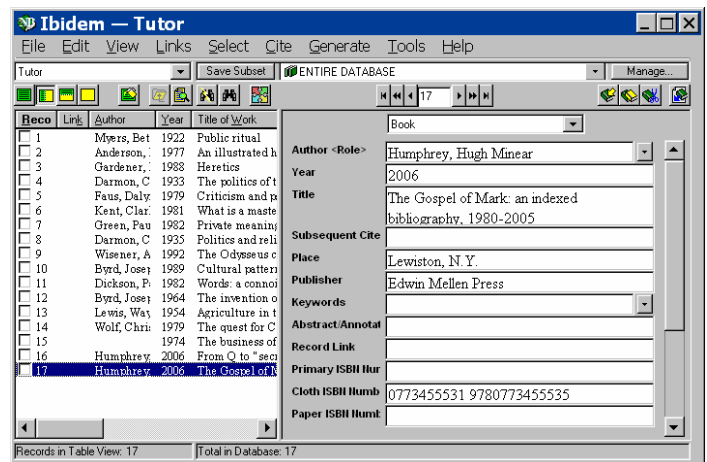
**2** Select a library and enter search terms. In the example below, the Library of Congress will be searched for works by Hugh Humphrey.



**3** Five records were retrieved, converted to Ibibem format, and saved in a temporary database. The first two have been marked to be appended to the Tutor database.



**4** Click Append on the screen to the left. The Tutor database will open with the two marked records added. See records 16 and 17 below.



## And that's not all!

On-Line Library Search is only one of Archiva Pro's many features that help you integrate web research with Nota Bene.

- ▶ Choose new options on the Links menu to take you directly from an Ibibem record to the corresponding record in Library of Congress, Amazon, WorldCat or Google Books.
- ▶ Go directly from Nota Bene to any web site (Ctrl+Shift+O).
- ▶ Search supported on-line databases for journal articles (e.g., JSTOR or Project Muse). Use your own subscription—usually available from your University.
- ▶ Select and copy data (Ctrl+C). Archiva's clipboard watcher will recognize copied bibliographic data, convert it to Ibibem format and save it in a temporary database.
- ▶ Review and edit captured records and append to your permanent Ibibem database.
- ▶ Standard version of Archiva available: lower price, more limited feature set. (We recommend the Pro version!)

## NOTA BENE

[www.notabene.com](http://www.notabene.com)

[sales@notabene.com](mailto:sales@notabene.com) [technicalsupport@notabene.com](mailto:technicalsupport@notabene.com)

718-382-1500 or 800-4NB-ORDER (800-462-6733)

fax: 718-382-0003